

# EUT Change PU

High voltage testing of components

Reducing the placement time

Increasing throughput



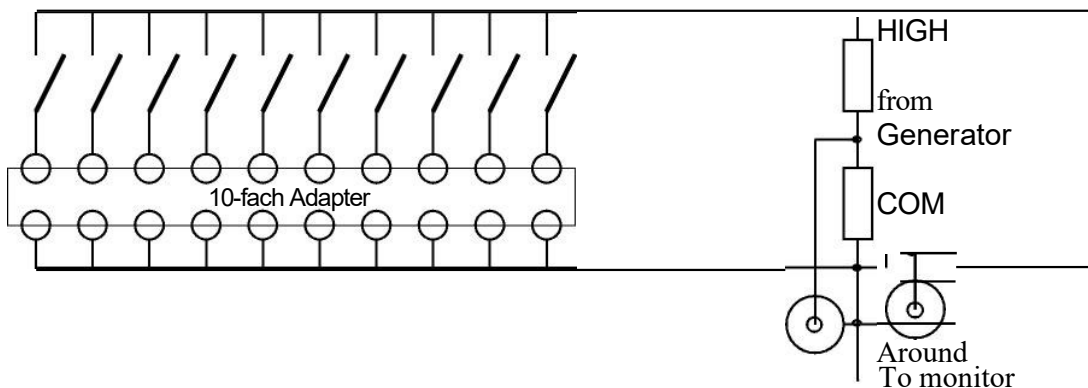
Test control units are available for various pulse generators for high-voltage testing of components. By using these test switchback units, the assembly times are significantly reduced and the throughput is significantly increased.

The test specimens are contacted via test adapters, which can be restocked during the ongoing exam and then quickly replaced.

Direct testing of 8/10/12 or 15 individual test specimens or the "differential/common mode" test of the a/b veins of IT facilities can be carried out. The test switching unit is controlled by the test generator.

The test specimens are covered by a safety test hood during testing. The connection to the test generator is coaxially on the back of the devices. This will achieve the highest level of personal safety for operators.

Principal shift, examples:



Test sizes can cause pulse voltage dividers and/or Impulse current resistance in the test switching unit.

