

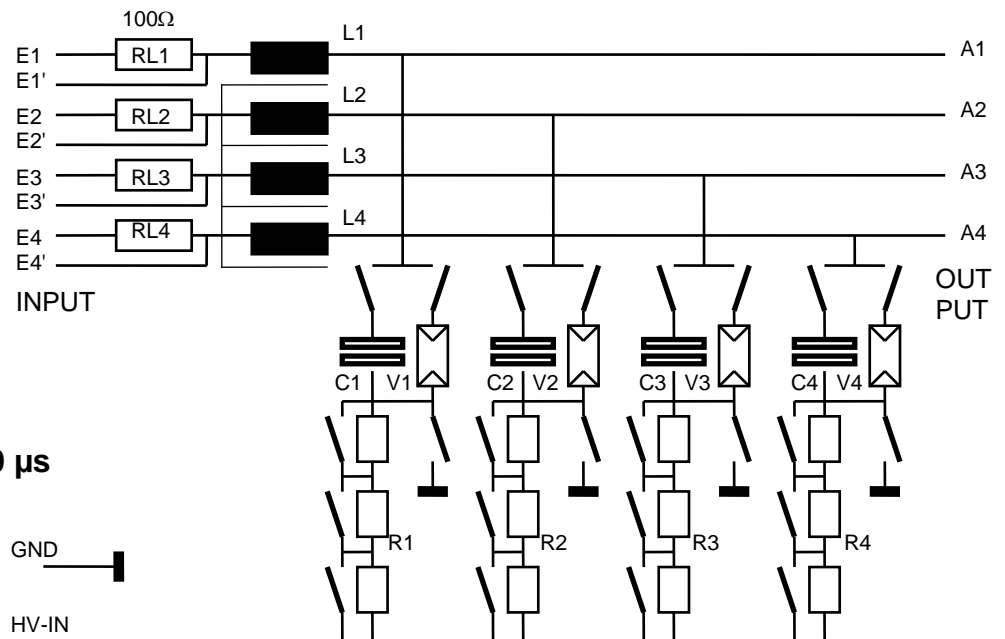
COUPLING / DECOUPLING NETWORK

CDN 304

100 V= / 1 A

max. test voltage:
5 kV, 1.2/50µs, 10/700 µs

max. test current:
2 kA, 8/20 µs



Designed for applying the impulse output voltage of the Combination Wave Generator to interconnection lines of the equipment under test, acc. to IEC 1000-4-5, Fig.10.

The coupling/decoupling network CDN 304 essentially consists of a current compensated decoupling inductor, L1 - L 4, and a set of coupling impedances to be inserted in the coupling path.

Technical specification:

CDN 304

Rated voltage		100 V=
Rated current		1 A
Max. test voltage		5.0 kV, 1.2/50µs, 10/700
µs		
Max. test current		2 kA, 8/20µs
Coupling Impedance, selectable:	C1 - C4	0.1 µF
	V1 - V4	over-voltage prot. 90V
	R1 - R4	25Ω / 50Ω / 75Ω / 100Ω
Decoupling inductors, current compensated	L1 - L4	20 mH
Decoupling resistor , switchable	RL1-RL4	+ 100 Ω
Dimensions: 19"-cabinet W * H * D		450*180*360mm ³
Weight		9.5 kg

Accessories :1 HV-IN connecting cable with 4 mm∅ connectors, 1 GND-connecting cable, yellow/green, 10 connecting plugs 19 mm, 4 connecting plugs 38 mm.