



AMP6002 SOLID STATE HIGH POWER AMPLIFIER

FEATURES

- Rack mounted system for easy installation
- High power solid-state devices
- Suitable for linear CW and composite signals applications
- Built-in protection circuits
- High efficiency, reliability and ruggedness

ELECTRICAL SPECIFICATIONS

Parameter	Specification	Notes
Operating Frequency Range	1.3 GHz \pm 5 MHz	
Peak Output Power @ P1dB	3.8 KWatt Min	CW
Power Gain	56 dB Min	
Input /Output Return Loss	10 dB Min	Relative to 50 Ohm
Harmonics 2 nd /3 rd	>45/60 dBc	
Spurious	60 dBc Min	Non Harmonics
Operating Voltage	208 VAC 3 Phase	
Power Consumption	12 KWatt Max	At rated Pout
Max Input Power	+15 dBm	Without damage
Load VSWR Protection	10 : 1	

MECHANICAL SPECIFICATIONS

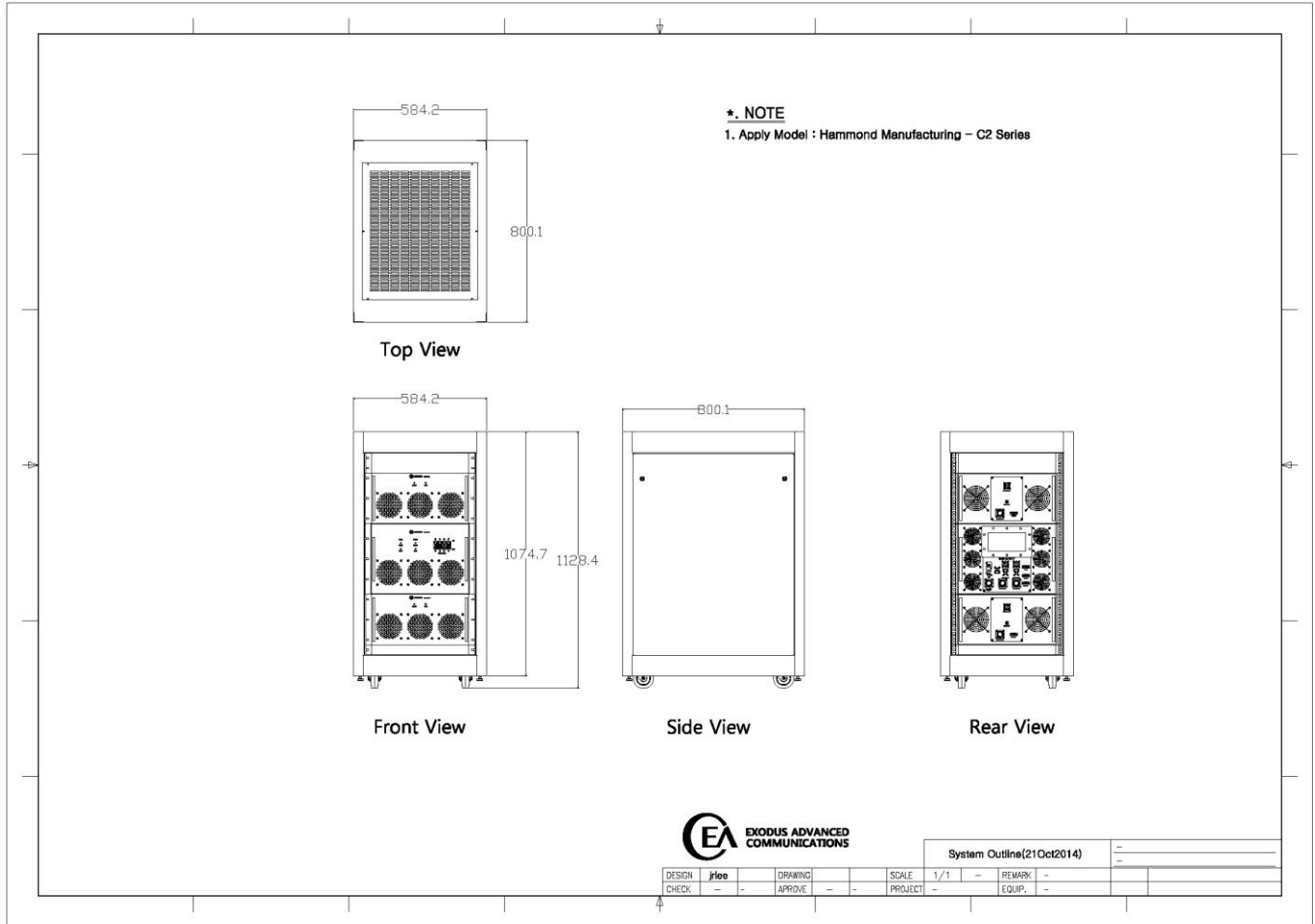
Parameter	Specification	Notes
Dimensions W x H x D	R5U + R7U + R5U	See outline drawing
Weight	-	
RF Connectors In/Out	Type N F / WR650 Waveguide	Front Panel Standard
Cooling	Built in forced air	
OPTIONAL: Digital Monitor & Control FWD, REV, VSWR, GAIN, ALC, V & I, TEMP	Ethernet RJ-45 TCP/IP, RS422/485, Optional GPIB Interface	Remote Bluetooth application

ENVIRONMENTAL CHARACTERISTICS

Parameter	Specification	Notes
Operating Ambient Temperature	0 to +50°C	
Storage Temperature	-20 to +70°C	
Relative Humidity	95% @ 40°C	Non Condensing
Shock & Vibrations	MIL STD 810E	

AMP6002 SOLID STATE HIGH POWER AMPLIFIER

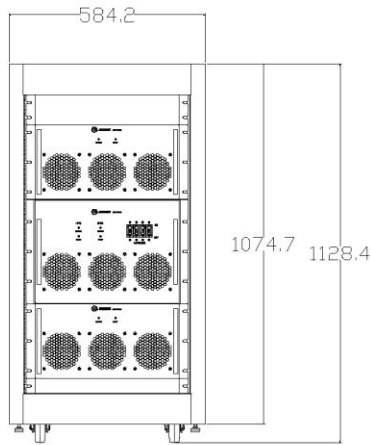
OUTLINE DRAWING



AMP6002 SOLID STATE HIGH POWER AMPLIFIER

***. NOTE**

1. Apply Model : Hammond Manufacturing – C2 Series



Front View



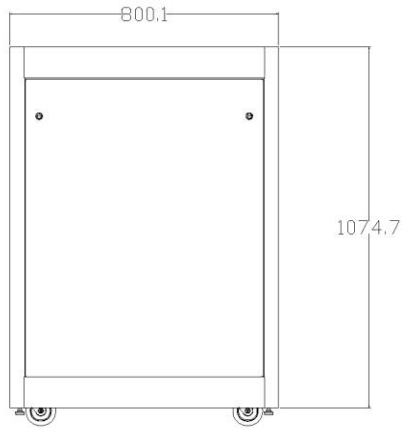
System Outline(21Oct2014)		-
		-

DESIGN	jlee	DRAWING	-	SCALE	1/1	REMARK	-
CHECK	-	APPROVE	-	PROJECT	-	EQUIP.	-

AMP6002 SOLID STATE HIGH POWER AMPLIFIER

***. NOTE**

1. Apply Model : Hammond Manufacturing – C2 Series



Side View



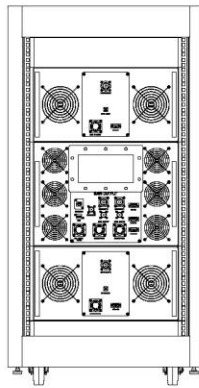
System Outline(21Oct2014)				-
				-

DESIGN	jlee	DRAWING		SCALE	1/1	REMARK	-
CHECK	-	APPROVE	-	PROJECT	-	EQUIP.	-

AMP6002 SOLID STATE HIGH POWER AMPLIFIER

***. NOTE**

1. Apply Model : Hammond Manufacturing – C2 Series



Rear View

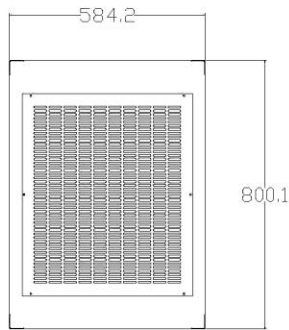
System Outline(21Oct2014)				-
				-

DESIGN	jlee	DRAWING		SCALE	1/1	REMARK	-
CHECK	-	APPROVE	-	PROJECT	-	EQUIP.	-

AMP6002 SOLID STATE HIGH POWER AMPLIFIER

***. NOTE**

1. Apply Model : Hammond Manufacturing – C2 Series



Top View

System Outline(21Oct2014)		-	-
DESIGN	jlee	DRAWING	-
CHECK	-	APPROVE	-
SCALE	1/1	REMARK	-
PROJECT	-	EQUIP.	-