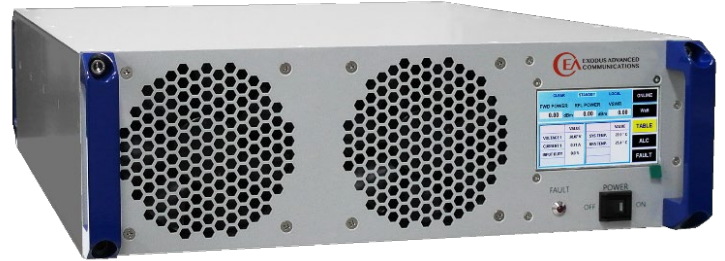




AMP4025P-1 SOLID STATE HIGH POWER PULSE AMPLIFIER

FEATURES

- Rack mounted system
- Class AB linear design
- Designed for high power S-Band Pulse Application
- Suitable for TWT driver applications
- Built-in protection circuits
- High reliability and ruggedness



ELECTRICAL SPECIFICATIONS: 50Ω, 25°C

Parameter	Specification			Notes	
Operating Frequency	2.7 - 3.1. GHz				
Power Output	1000 Watt Min			Peak Pulse	
Power Gain	23 dB Typ			Input Power 0.45-0.6W	
Pulse Characteristics	Width	PRF	Droop	Rise / Fall	
	12.5μS	1000	<1dB	100 nS Max	
Pulse to Pulse Amplitude stability	0.1 dB				
Pulse Jitter	2 nS Max				
Input Return Loss	-14 dB Max			Relative to 50 Ohm	
Operating Voltage	100 - 240 VAC				
Power Consumption	500 Watt Avg			At 1KW Peak Pulse	
Harmonics	<-30 dBc Typ				
Load VSWR Protection	∞ : 1				

ENVIRONMENTAL CHARACTERISTICS

Parameter	Specification	Notes
Operating Ambient Temperature	0 to +50 °C	
Storage Temperature	-40 to +85 °C	
Relative Humidity	5 to 95 %	Non-condensing

MECHANICAL SPECIFICATIONS

Parameter	Specification	Notes
Dimensions W x H x D	430 x 133.3 x 560 mm	3U - Excluding handles
Weight	20 kg.	
RF Connectors In / Out	Type-N Female	Front or rear panel
AC Power / Interface Connector	IEC 60320-C14 / 9-Pin D-Sub	Or equivalent
Cooling	Built in Fan Cooling	Variable speed
OPTION: Digital Monitor & Control FWD, REV, VSWR, GAIN, ALC, V & I, TEMP	Ethernet RJ-45 TCP/IP, RS422/485, USB Optional GPIB Interface	

AMP4025P-1 SOLID STATE HIGH POWER PULSE AMPLIFIER

OUTLINE DRAWING

