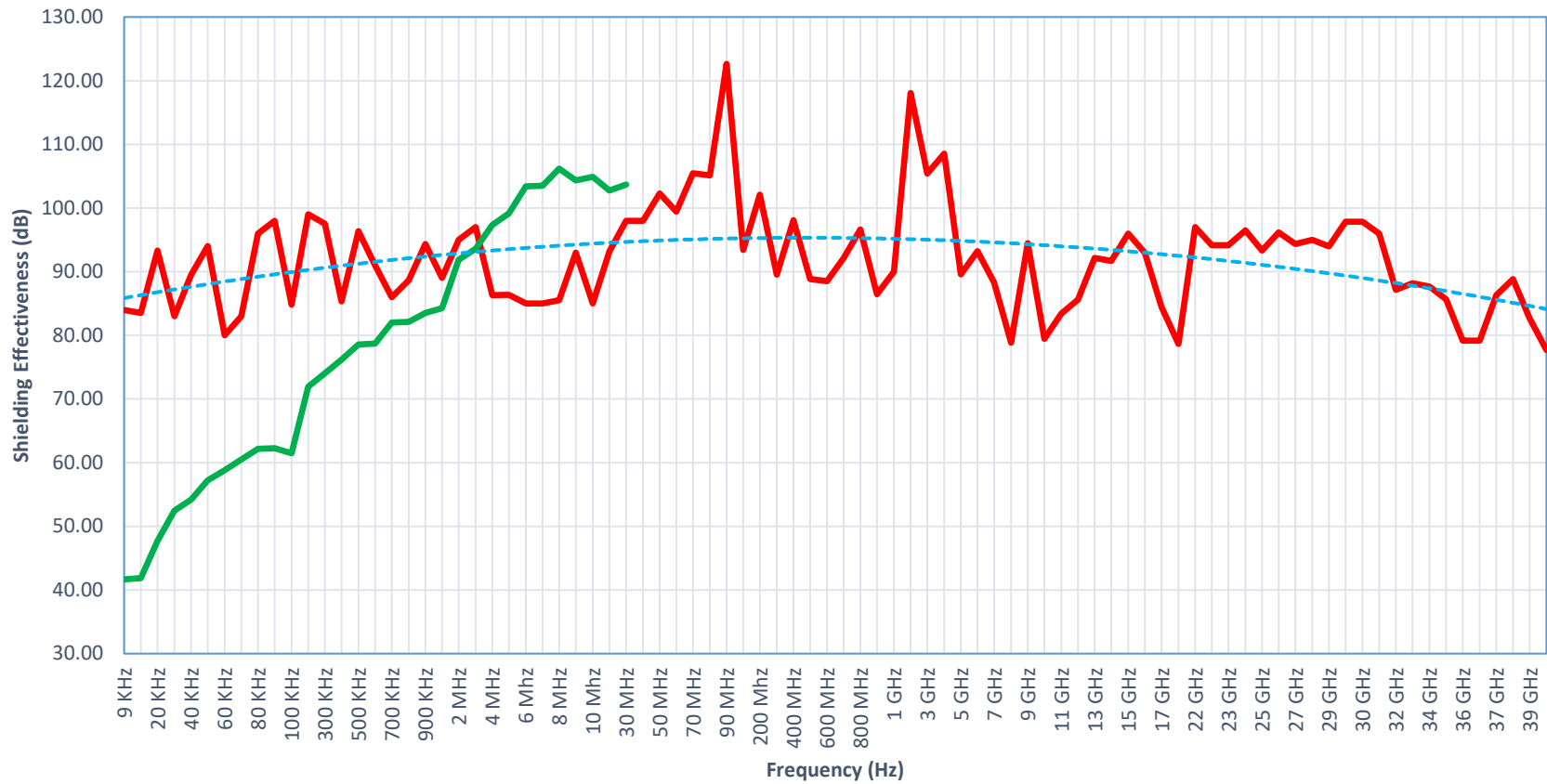


## AL5 Double Layer Shielding Effectiveness (As Installed) Tested per IEEE-299 : 2006



— Aluminum Panels with .005" x 4.00" EC aluminum tape on both sides

— Magnetic Field Aluminum Panels with .005" x 4.00" EC aluminum tape on both sides

- - - Poly. (Aluminum Panels with .005" x 4.00" EC aluminum tape on both sides)