

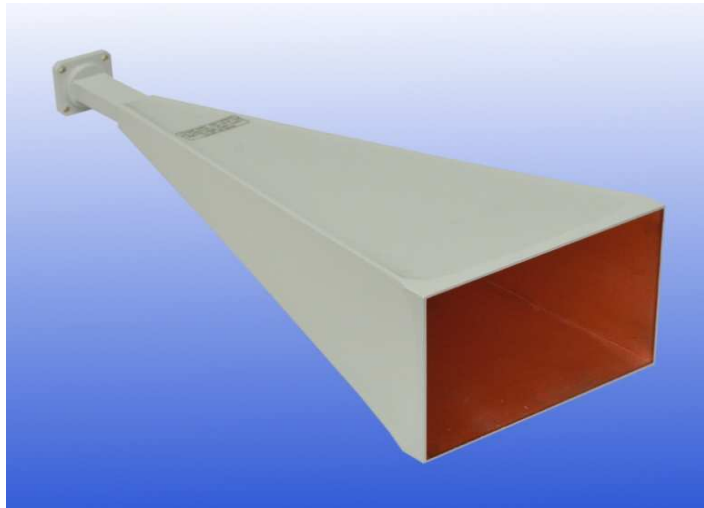
12 - 18 GHz Linearly Polarised 23 dBi Horn Antenna fitted with a WG18 / WR62 Flange

WG18 R140 WR62

Catalogue Number: **QSH-SL-12-18-F-23**

Q-par Reference: **QMS-00199**

Contents: **Summary**
Antenna Gain
Beamwidth
VSWR



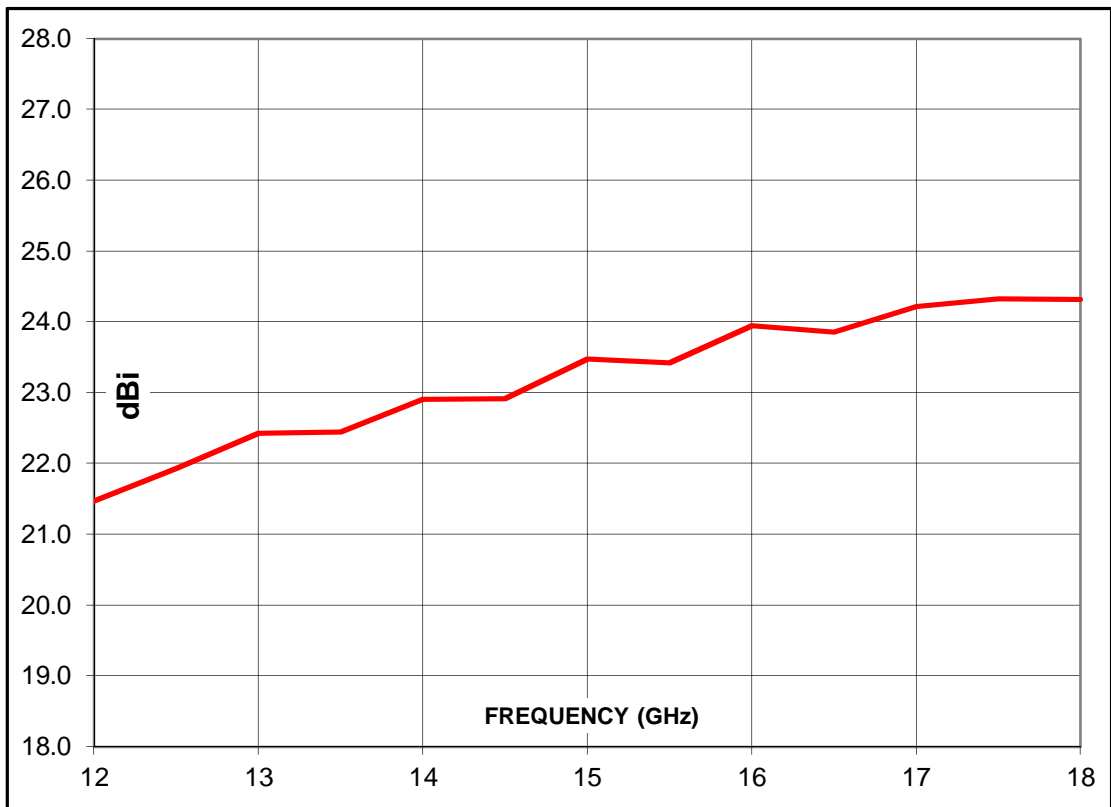
SD 16/12/14

Summary

Frequency	12 to 18 GHz
Connector type	UG419/U waveguide flange
VSWR	< 1.1 : 1 (WG18 calibration)
Gain	21.5 to 24.7 dBi
Power handling	2.2 kW c.w. 80 kW peak.
Weight	1.25 kg
Size- max.	129 mm x 82 mm ext. aperture x 350 mm long (nominal)
Mounting	WG18 UG419/U waveguide Flange

Typical Antenna Gain - at 1 metre range

This is calculated by reference to standard gain horn antennas, and cross checked with reference to the antenna beamwidth, with an estimated error of +/- 0.8dB.



Frequency GHz	Gain dBi	Antenna Factor dB/m
12.0	21.5	30.3
13.5	22.4	30.4
15.0	23.5	30.3
16.5	23.9	30.7
18.0	24.3	31.0

