



AMP6007 SOLID STATE HIGH POWER AMPLIFIER

FEATURES

- Rack mounted system for easy installation
- High power solid-state devices
- Suitable for linear CW and composite signals applications
- Built-in protection circuits
- High efficiency, reliability and ruggedness

ELECTRICAL SPECIFICATIONS

Parameter	Specification	Notes
Operating Frequency Range	5.0 GHz \pm 5 MHz	
Peak Output Power	2.0 KWatt Min	CW
Power Gain	63 dB Min	
Input /Output Return Loss	10 dB Min	Relative to 50 Ohm
Harmonics 2 nd /3 rd	>45/60 dBc	
Spurious	60 dBc Min	Non Harmonics
Operating Voltage	208 VAC 3 Phase	
Power Consumption	10 KWatt Max	At rated Pout
Max Input Power	+8 dBm	Without damage
Load VSWR Protection	10 : 1	

MECHANICAL SPECIFICATIONS

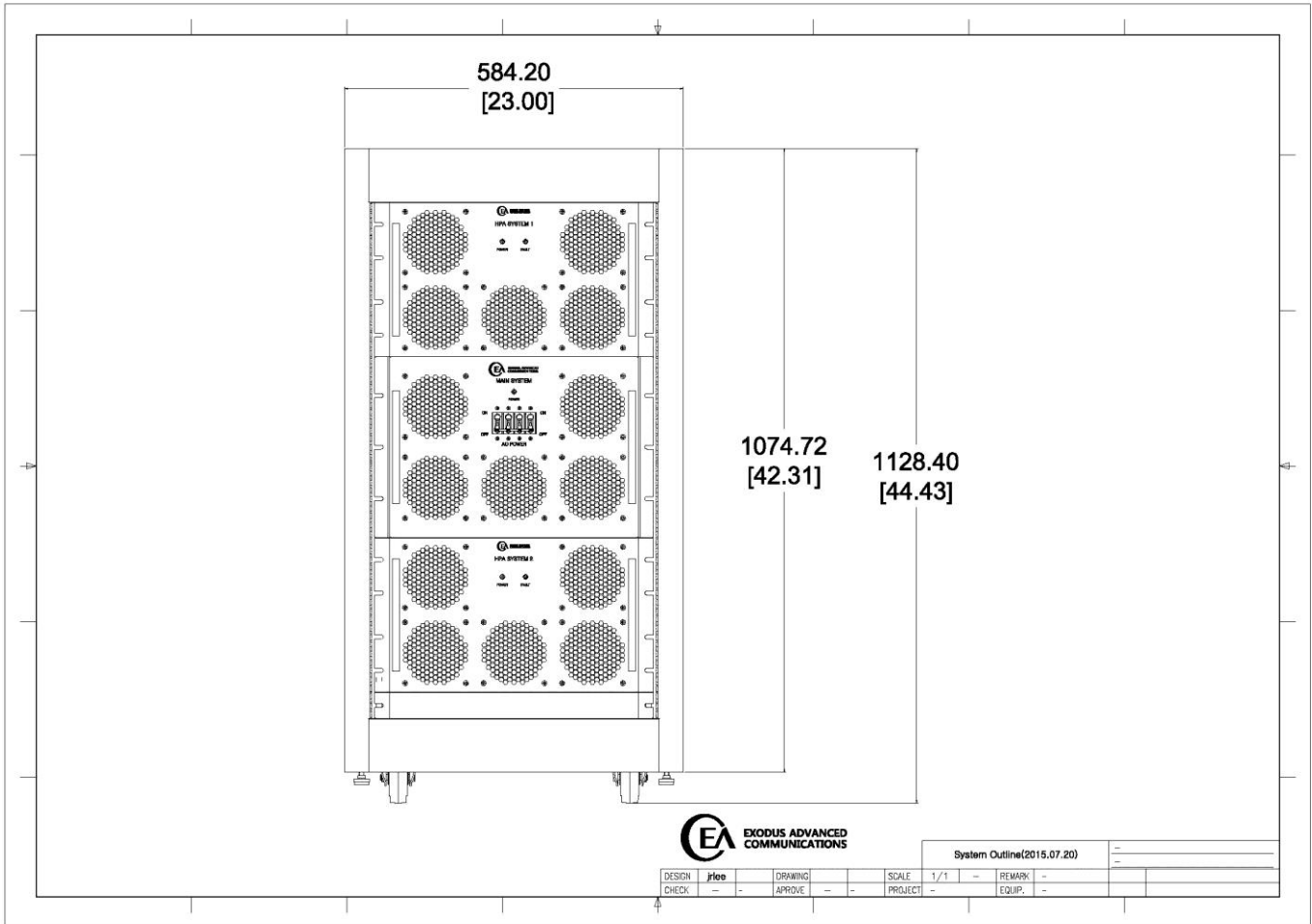
Parameter	Specification	Notes
Dimensions W x H x D		See outline drawing
Weight	-	
RF Connectors In/Out	Type N F / WR650 Waveguide	
Cooling	Built in forced air	
OPTIONAL: Digital Monitor & Control FWD, REV, VSWR, GAIN, ALC, V & I, TEMP	Ethernet RJ-45 TCP/IP, RS422/485, GPIB Interface	Remote Bluetooth application

ENVIRONMENTAL CHARACTERISTICS

Parameter	Specification	Notes
Operating Ambient Temperature	0 to +50°C	
Storage Temperature	-20 to +70°C	
Relative Humidity	95% @ 40°C	Non Condensing
Shock & Vibrations	MIL STD 810E	

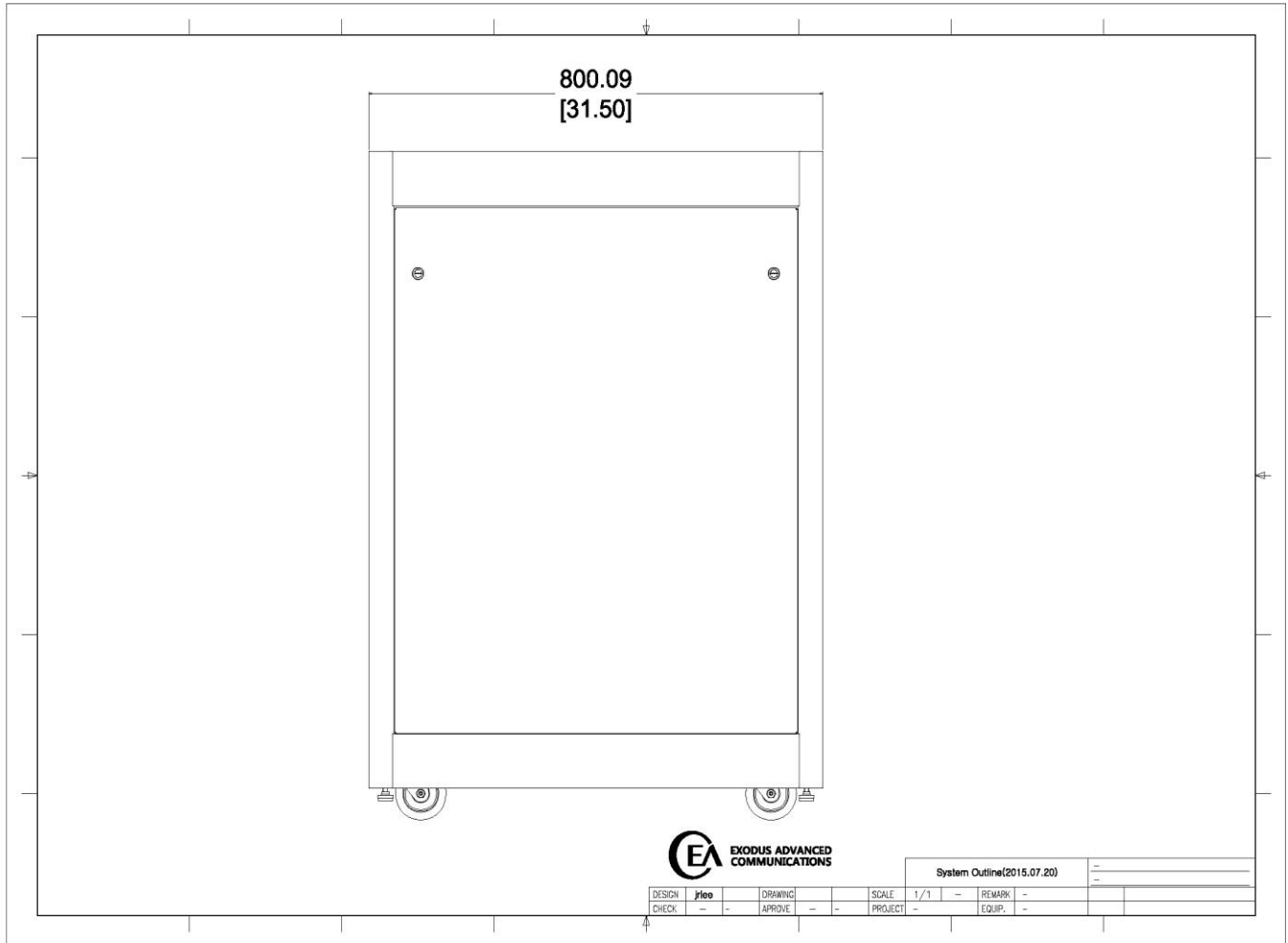
OUTLINE DRAWING

- System Outline– Front



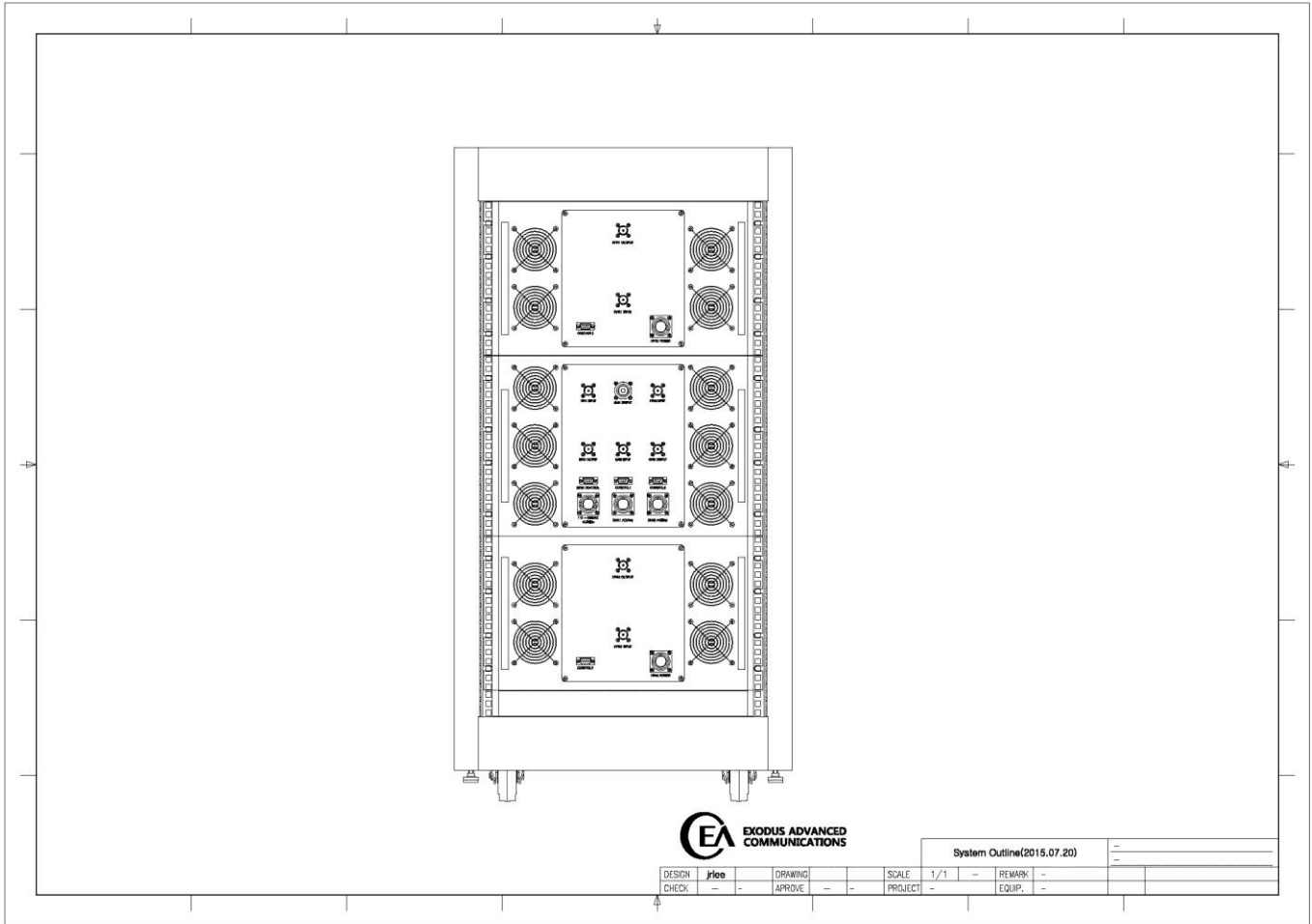
AMP6007 SOLID STATE HIGH POWER AMPLIFIER

- System Outline – Side



AMP6007 SOLID STATE HIGH POWER AMPLIFIER

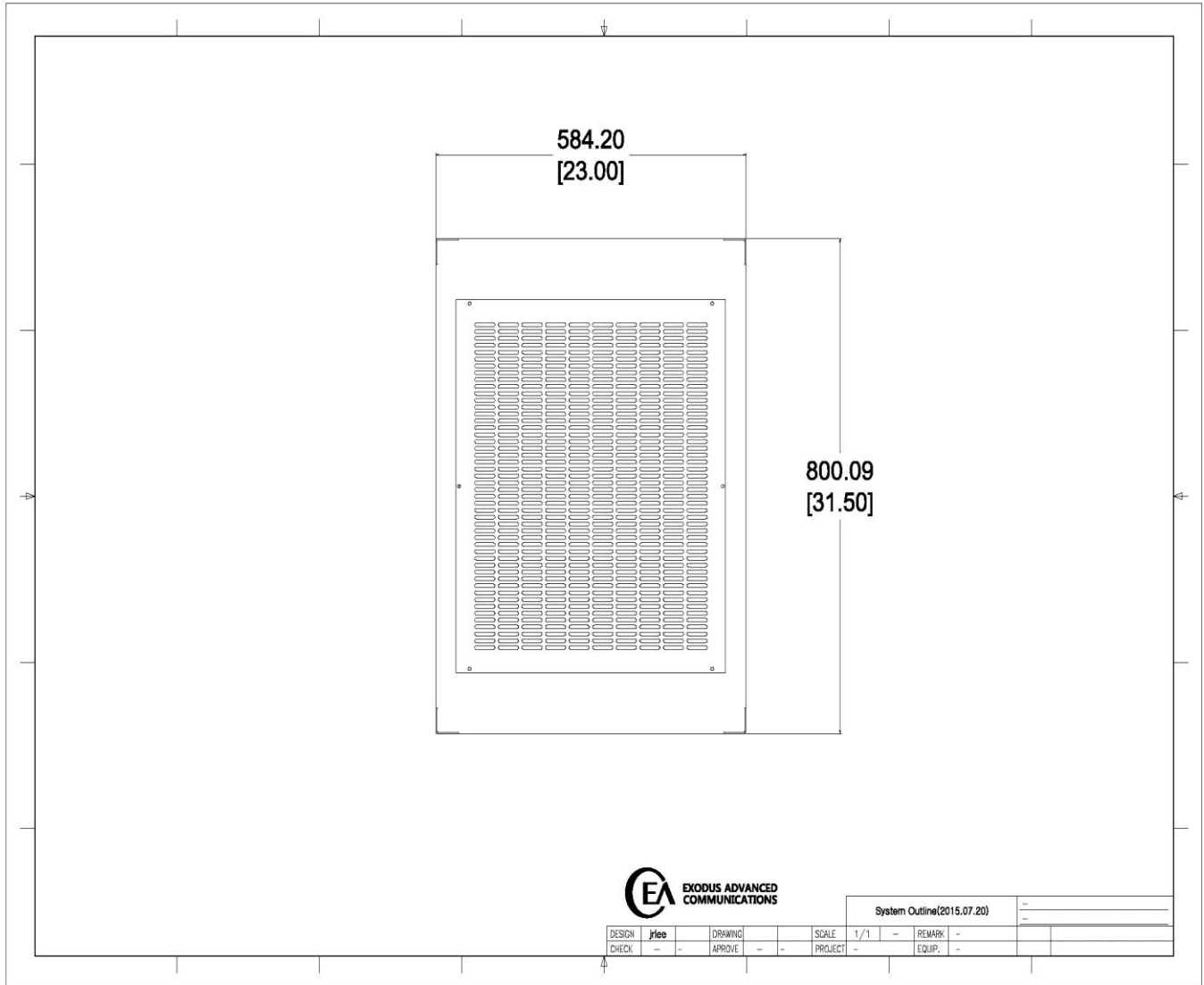
- System Outline - Rear



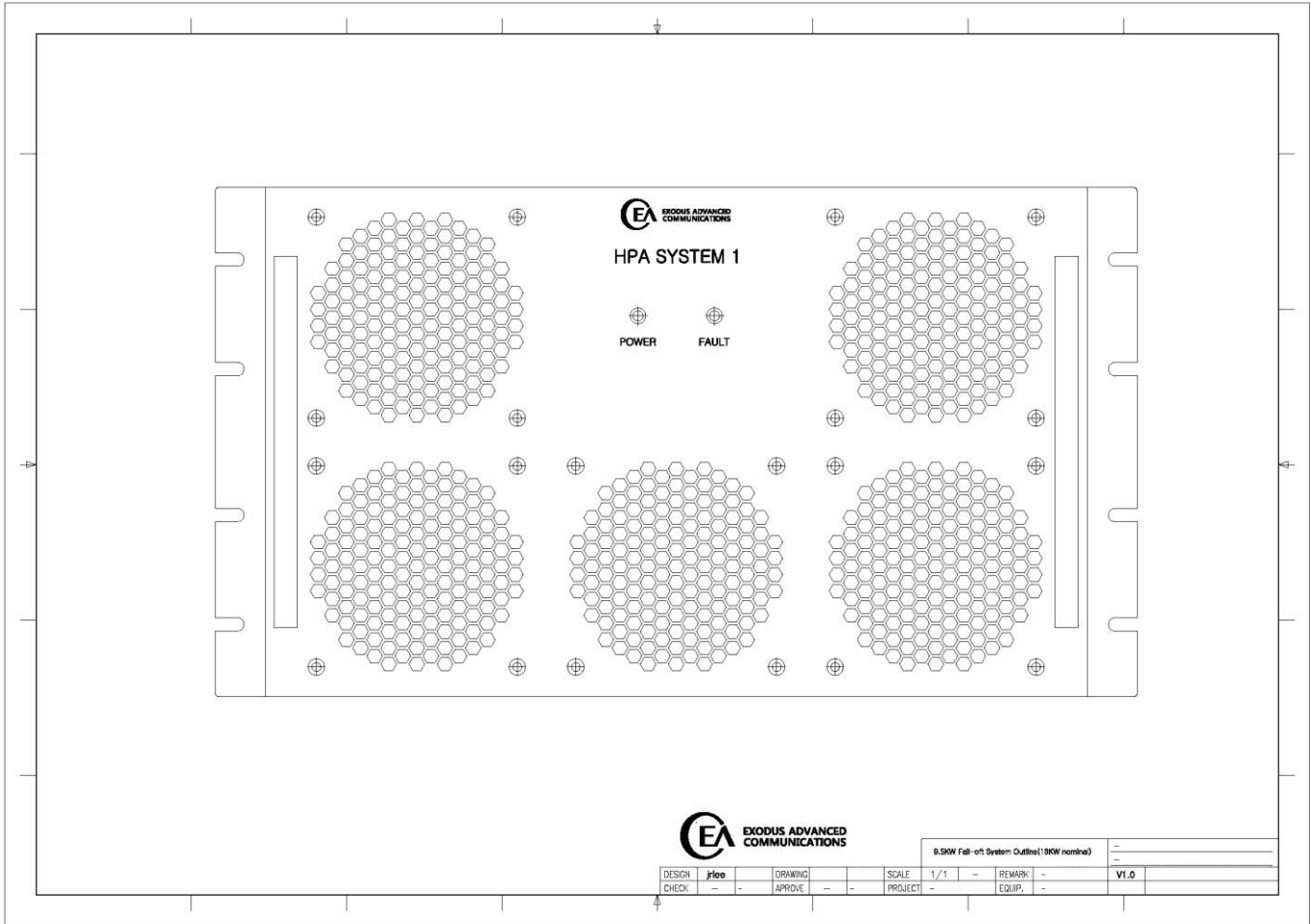
System Outline(2015.07.20)						-	
DESIGN	jrlee	DRAWING		SCALE	1/1	REMARK	-
CHECK	-	APPROVE	-	PROJECT	-	EQUIP.	-

AMP6007 SOLID STATE HIGH POWER AMPLIFIER

- System Outline – Top

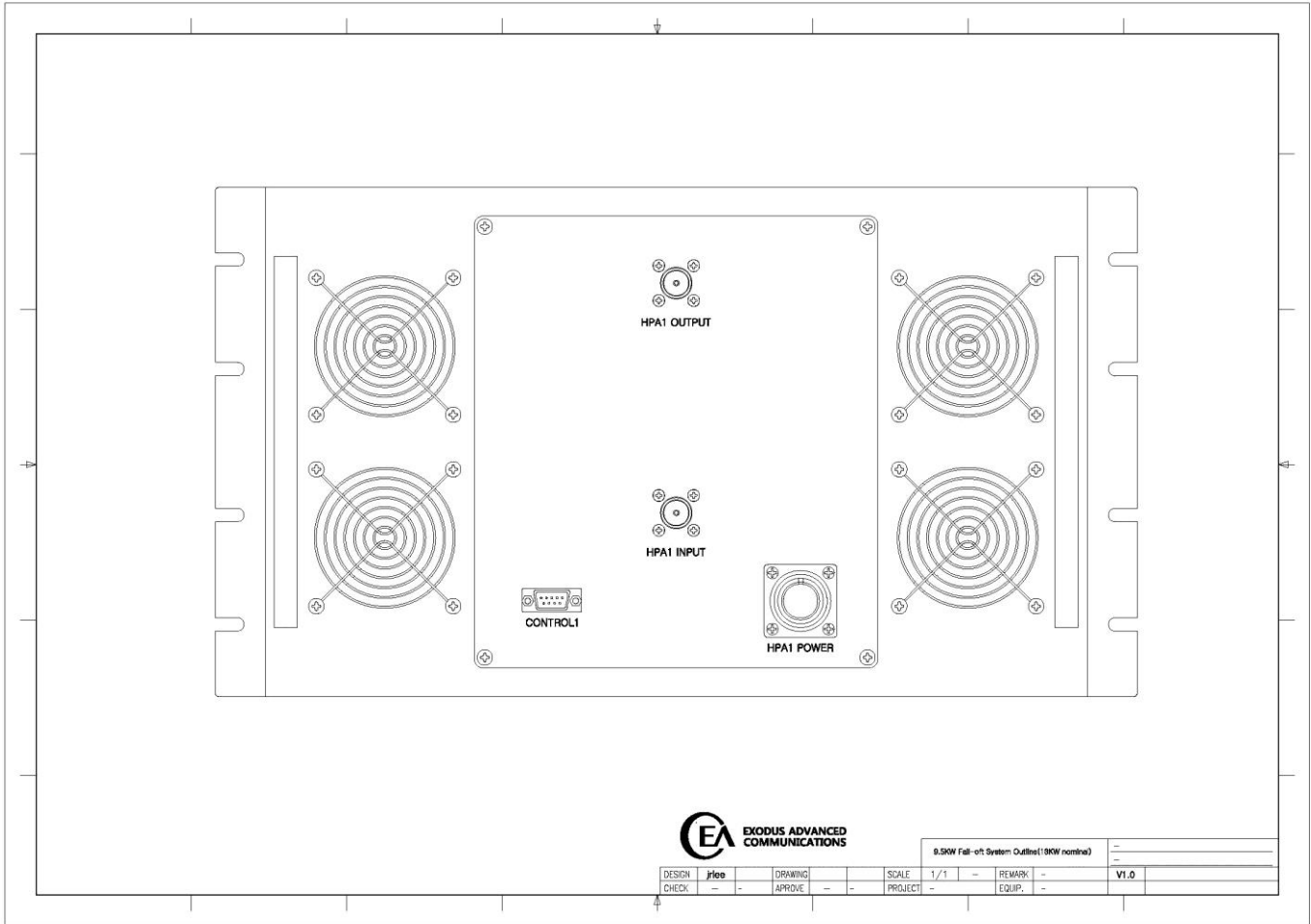


- System Outline –HPA System Front



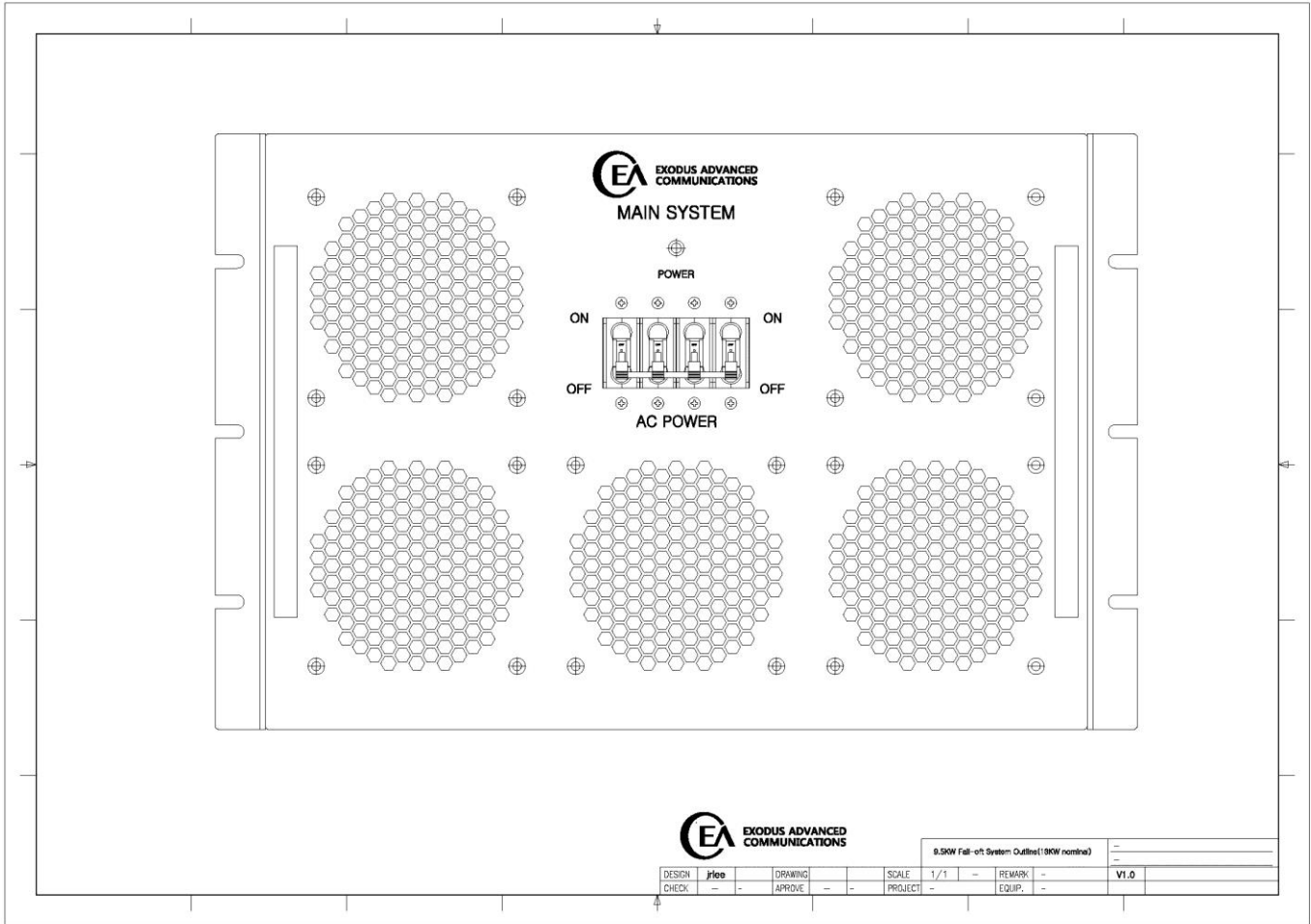
AMP6007 SOLID STATE HIGH POWER AMPLIFIER

- System Outline – HPA System Rear



9.5KW Full-on System Outline (19KW nominal)							
DESIGN	jlee	DRAWING	-	SCALE	1/1	REMARK	-
CHECK	-	APPROVE	-	PROJECT	-	EQUIP.	-
							V1.0

- System Outline –Main System Front



- System Outline –Main System Rear

