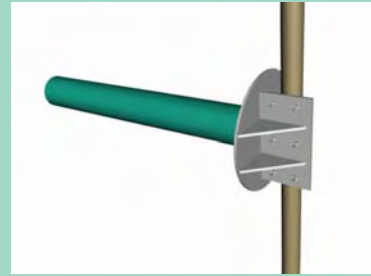


# Directional Antennas

## Helical Antennas

TMC Design Corporation offers helical antennas providing continuous coverage from 100 MHz to 6000 MHz (6 GHz) in both left or right hand circular polarization. All helical models can be manufactured in both commercial or military grades. Call us for more information on delivery and custom applications.



Model	Frequency MHz	Gain dB	Beamwidth Degrees	Max Power Watts
HE-0580-10	5000-6000	~11.75	35	200
HE-0075-10	4000-5000			
HE-0150-8	1530-2730			
HE-0200-10	1500-2250	12.4	35	200
HE-0200-18	1500-2250	15	26	200
HE-0238-6	1200-1600	10.2	45	200
HE-0238-8	1200-1600	11.4	38	200
HE-0238-10	1200-1600	12.4	35	200
HE-0238-13	1200-1600	13	30	200
HE-0238-18	1200-1600			
HE-0238-165-HH	1200-1600			
HE-0300-8	1000-1500	11.4	38	200
HE-0500-10	480-880	10	45	100
HE-1000-6	225-400			
HE-1000-6EC	225-400			
HE-1000-10	230-360	10	45	100
HE-1500-4	200-300	8.4	54	1000
HE-2000-4	150-225	8.4	54	1000

