

HE-238-13 Helical Antenna

The HE-238-13 antenna is a high power, wide band, helical antenna that operates in the 1.2 to 1.6 GHz range. These heavy-duty antennas will provide years of reliable service in either military or commercial applications.

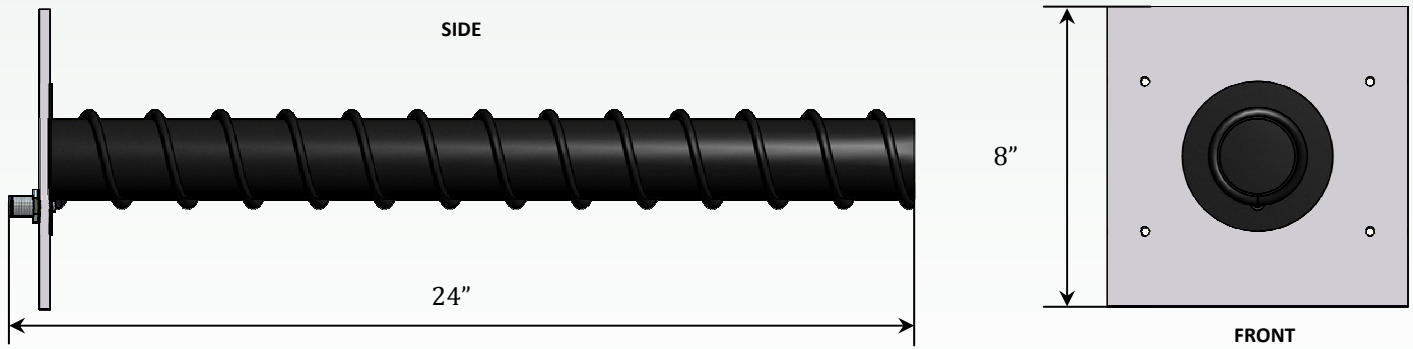
Antenna orders are offered with pole-mounting hardware at request. A motorized dual-mount, which will house up to two HE-238 antennas, is also available. The dual-mount is available in manual and motorized modes. The motorized mount will allow users to reposition the antenna (along azimuth and elevation planes) remotely for remote applications.

These antennas will provide years of trouble-free service in extreme environments and are currently in use by several U.S. Military installations in remote locations.

FEATURES

- Ideal for GPS applications
- Ideal for GSM mobile phone applications
- RHCP and LHCP models available
- Lightweight
- Durable
- Suitable for high-power applications
- N-Type Female connector
- The HE-238-13 is designed to operate under rigorous conditions and environments.
- All TMC Design antennas are designed and manufactured under with the auspices of our AS9100/ISO9000-certified quality management program

SPECIFICATIONS

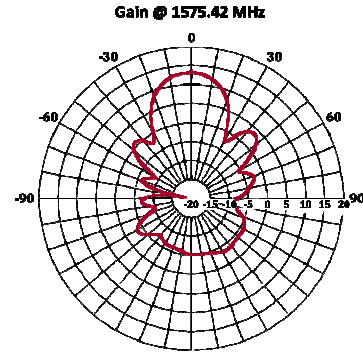
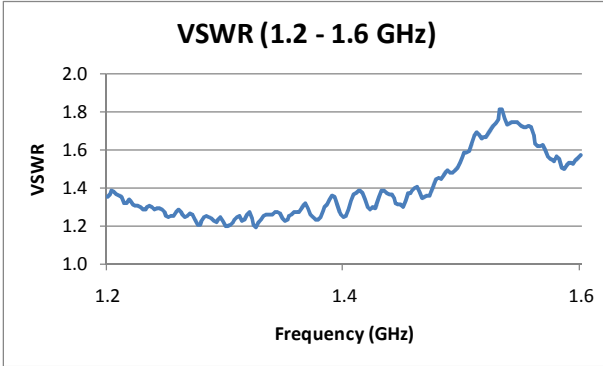


Type	Helical	Maximum VSWR	2:1 max
Frequency Range	1.2 to 1.6 GHz	Connector	Type-N (female)
Gain	13 dB	Height	24"
Polarization	RHCP or LHCP	Width	8"
HPBW	30°	Weight	3 lbs
Maximum Power	500 W		



HE-238-13 Helical Antenna

PERFORMANCE



CUSTOMIZING YOUR HE-238-13 ANTENNA

MOUNTING OPTIONS

Antennas can be modified to be mounted in the manner that best fits your requirements. Magnetic mounts are recommended for applications involving automobiles. A tripod will best fit situations where quick-setup and temporary emplacement necessary. Other options include antenna towers, and solar-powered mount systems for remote operation. Contact a TMC Design representative for assistance in choosing the best mounting option.

RF MATING OPTIONS

All TMC Design antennas can be modified to include an RF connector that best fits your application. Be sure to specify the connector that is needed or ask one of our representatives for assistance in finding an RF mating solution that will best fit your requirements.

HIGH-POWER OPTIONS

To increase range and improve reception, most TMC Design antennas can be modified operate in high-power applications.

COLOR OPTIONS



A variety of paint options are available to fulfill your coating requirements. Federal Standard 595B colors, Chemical Agent Resistant Coating (CARC) or spot color schemes are available. Contact a TMC Design representative to specify coating options (*most popular colors shown above*).



TMC Design Headquarters

4325 Del Rey Blvd.
Las Cruces, NM 88012
(tel) 575-382-4600
(fax) 575-523-8588

TMC Design Space Operations Center

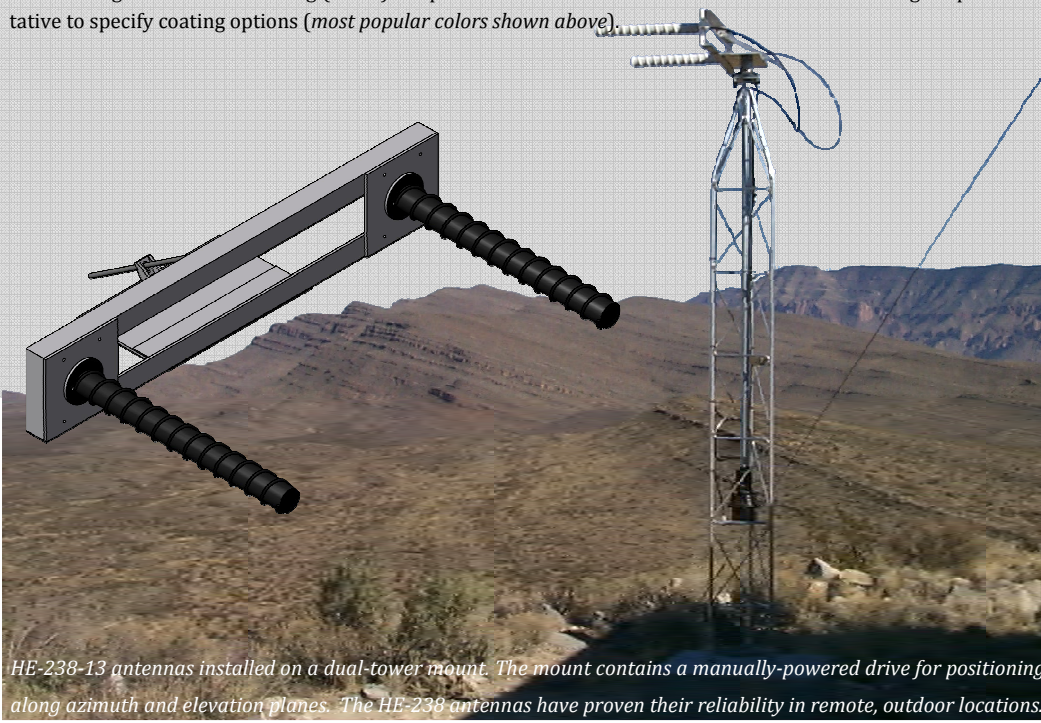
7765 Electronic Drive
Colorado Springs, CO 80922
(tel) 719-622-0130
(fax) 719-622-0134

TMC Design Space Planning & Tactics

5030 Bradford Drive
Building 1, Suite 230
Huntsville, AL 35805
(tel) 256-830-4055
(fax) 256-830-4066

www.tmcdesign.com

tmcd@tmcdesign.com



HE-238-13 antennas installed on a dual-tower mount. The mount contains a manually-powered drive for positioning along azimuth and elevation planes. The HE-238 antennas have proven their reliability in remote, outdoor locations.