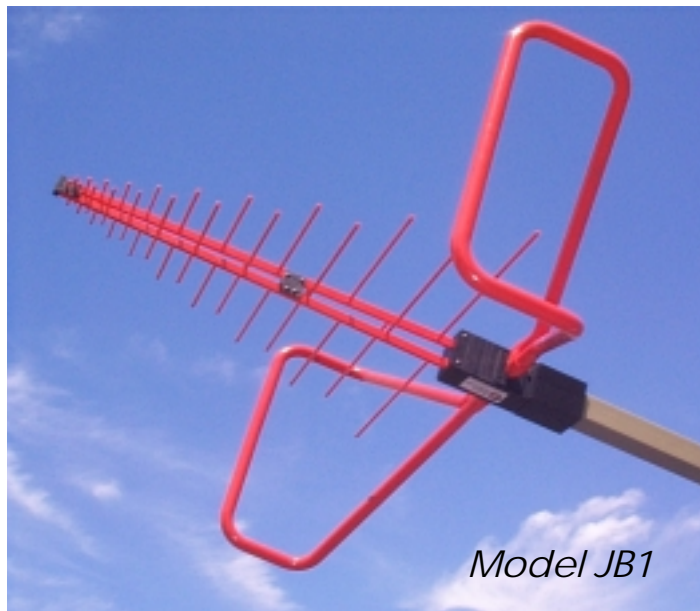


### Specifications, JB Series Antennas

Frequency range:	See below
Impedance:	50 ohms nominal
VSWR:	<2:1 above 200 MHz
Connector:	Type N female
Polarization:	Linear
Imbalance:	Less than 1 dB
Max. Power:	See curve
Length:	51 in. (130 cm)
Wing span:	44 in. (112 cm)
Width:	19 in. (48 cm)
Weight:	10 lbs. (5 kg)
Mounting Tube:	22 mm stainless steel
Wing Mount:	Dual compression
Finish:	Sunol powdercoat



**JB Series** antennas are compact, high-performance instruments designed for EMC emissions and immunity testing.

The broadband characteristics of these antennas enable them to operate over a wide frequency range - a must for automated test environments. Innovative design and manufacturing techniques result in long-lasting strength and mechanical integrity. The result is an electrically stable measuring instrument that maintains calibration over extended use.

The antenna boom is made from a custom aluminum extrusion that reduces the number of parts at the nose. The result is a stronger, more stable feedpoint and excellent cross-polarization properties. The unique shape allows for a larger feed cable to be used, which significantly increases the maximum power rating. Dipole elements are permanently attached to the boom by an assembly technique that maintains excellent electrical characteristics for the life of the antenna.

The low-frequency wings are swept forward and turned in at the ends to reduce ground plane coupling while maintaining performance. Each wing is attached with dual compression fittings for true alignment. A tough powdercoat finish with UV inhibitors seals the aluminum structure and protects it from sunlight and moisture.

Includes Individual A2LA accredited calibration

<u>Model</u>	<u>Frequency</u>	<u>Options</u>	<u>Applications</u>
JB1	30 - 2000 MHz	• Sunol SNAP! mount	• Radiated emissions
JB3	30 - 3000 MHz	• Tripod mount	• Radiated immunity
JB5	30 - 5000 MHz	• Carrying case	• Pre-scan / Full-compliance
JB6	30 - 6000 MHz		

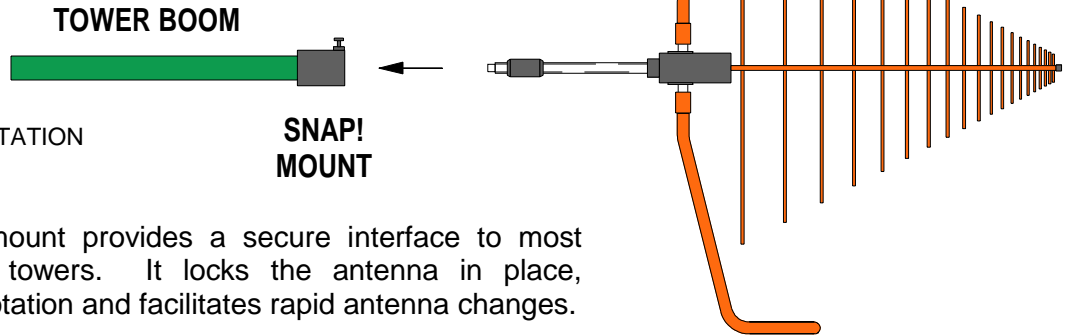


Sunol Sciences Corporation

## Mounting

All Sunol antennas have a 22 mm stainless steel rear mounting tube. This configuration enables polarization changes without vertical displacement of the antenna, and minimizes the effect of the RF cable by keeping it well behind the antenna elements.

- QUICK
- SECURE
- NO UNWANTED ROTATION



The Sunol SNAP! mount provides a secure interface to most antenna positioning towers. It locks the antenna in place, prevents unwanted rotation and facilitates rapid antenna changes.

