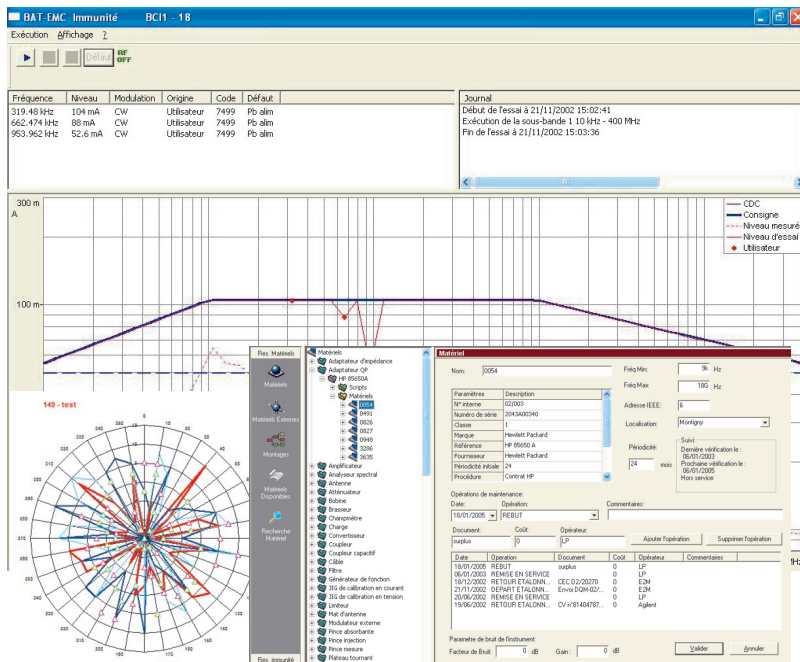


BAT-EMC

All-in-one EMC test software



BAT-EMC

A test bench management and control software package developed by NEXIO since 1995.

Flexible, easy to use and completely independent from any measuring device or systems manufacturers, BAT-EMC answers to the increasing productivity and quality requirements of EMC tests and is now widely used in private laboratories and industrial groups in the civil, automotive, military and aerospace sectors worldwide.

KEY POINTS

- Unique User Interface** for all tests.
- Independent** from any measuring device manufacturers.
- Free drivers** and **over 500 supported devices**.
- Efficient and dedicated technical support**.
- Wide range of supported standards** (ENxx, CISPR, AUTOMOBILE, DO160, MIL STD, ETSI...).
- Interface** Agilent VEE™, Windows LabView™, LabWindows CVI™.
- Operating system:** Win XP, Vista, Seven, Windows 8, Windows 10.
- Report in MS Office™** 2003 2007 2010 2013.

COMPLIANT STANDARDS

- Automotive:** 2004/104/EC, ISO 11451/2 SAE J1113 & J551, CISPR 12 & 25, Ford, BMW, Mercedes, General Motors, PSA, Renault-Nissan, Toyota, Chrysler-Fiat...
- Commercial:** CISPR/EN 55011,14, 15, 22, 24, EN61000-4-3, EN61000-4-6, FCC Part 15, IEC 61967 & IEC 62132...
- Military & Aerospace:** MIL STD 461/462, DO 160 (RTCA) ...

DRIVERS

- Advantest, Agilent, Anritsu, AR, Fluke, Gauss Instruments, Gigatronics, Holaday, HP, Lecroy, Marconi, Milmega, Narda, Philips, PMM, Prana, R&S, Siepel, Tektronix...

PRODUCT LINE

Complete & modular

- EASY-Monitoring:** Range of cost-killer tools for the control and monitoring of your devices under test.
- Easy TTL:** Module to drive an acquisition TTL card to activate outputs and check inputs.
- BAT-Image:** Automatic EUT video surveillance (real time analysis & detection).
- AT-DIAG:** Management of on-board calculators with communication protocols (CAN, LIN, FlexRay, KP2000, ISO8, ARINC...).

EMC TEST MODULES

- EN55020/CISPR 20
- Radiation patterns
- ETSI Radio measurements
- Click module according to CISPR14-1
- Radiated & Conducted Emission
- Radiated, Conducted & Magnetic Susceptibility

