

EMI Powerline Filters

Series GF 58260

10 TO 250 AMPS

APPLICABLE SPECIFICATIONS

MIL-F-15733 General specifications for filters, military
MIL-STD-202 Test methods for component parts, military
MIL-STD-220 Test method of insertion loss as applicable
Or CISPR17

FUNCTIONAL CHARACTERISTICS

Voltage Rating: 100 VDC
120/208 VAC (50/60 Hz)
120/208 VAC (400 Hz)
277/480 VAC (50/60 Hz)
277/480 VAC (400 Hz)

Voltage Drop: 2% maximum at full rated unity power factor load

Temperature: -10 C to +85C

Current Overload: 140% maximum current rating for 15 minutes maximum

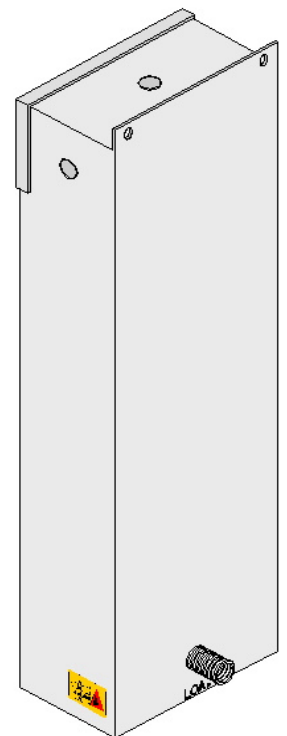
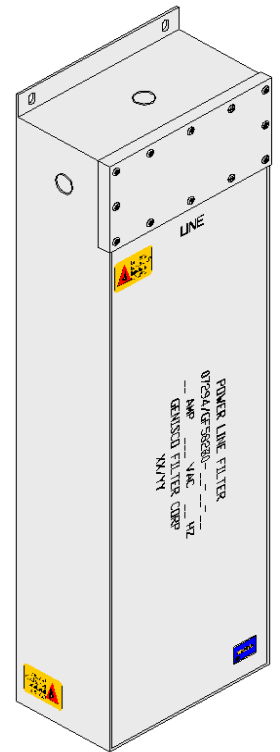
Insertion Loss: (see Figure 1) 50 Ohm System

Dielectric With-
standing voltage: 2 X rated voltage

Insulation
Resistance: IAW MIL-F-15733 (prior to installation of discharge circuits)

CASE ASSEMBLY

- Enclosed terminations, input end
- Pigtail terminations, filtered output end
- Multi-circuit configurations
- 100 dB series insertion loss to 10GHz
- Filter assemblies inspected per Group A of MIL-F-15733 as applicable
- Welded and soldered seams for shielding effectiveness
- Discharge circuits (bleeder resistors) to reduce shock hazard
- Case material CRS
- RF tight removable covers
- Prewired standoffs and lugs



EMI Powerline Filters

Series GF 58260

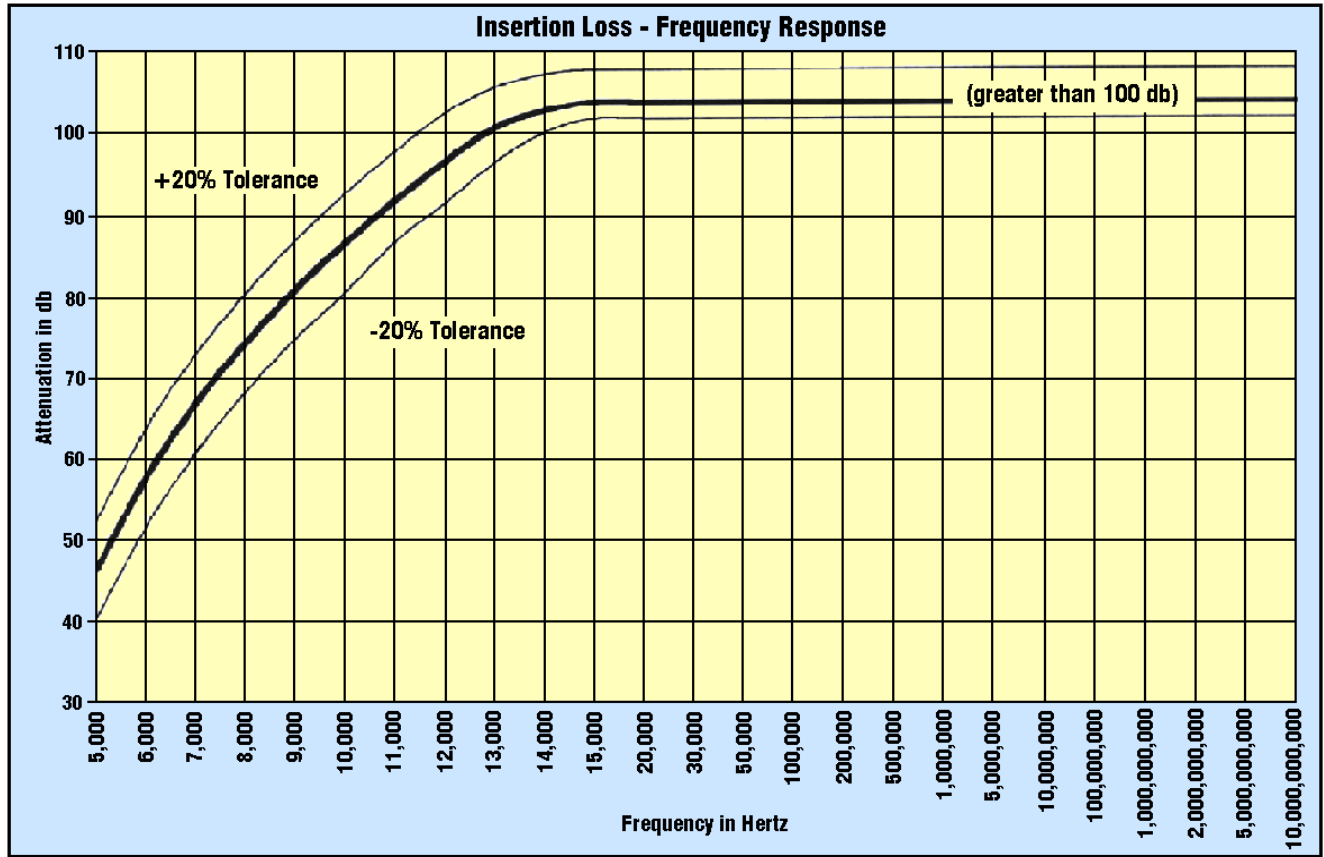
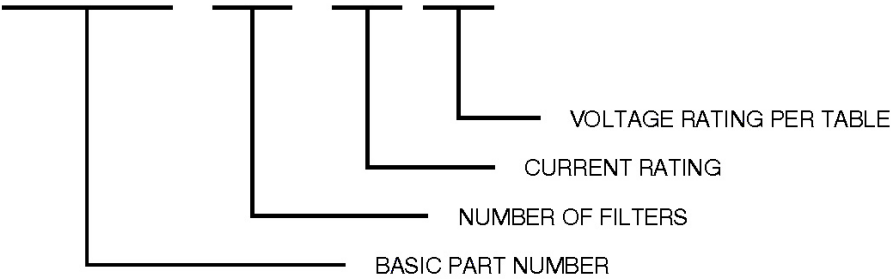


Figure 1

ORDERING INFORMATION:

GF 58260 - () X () - ()



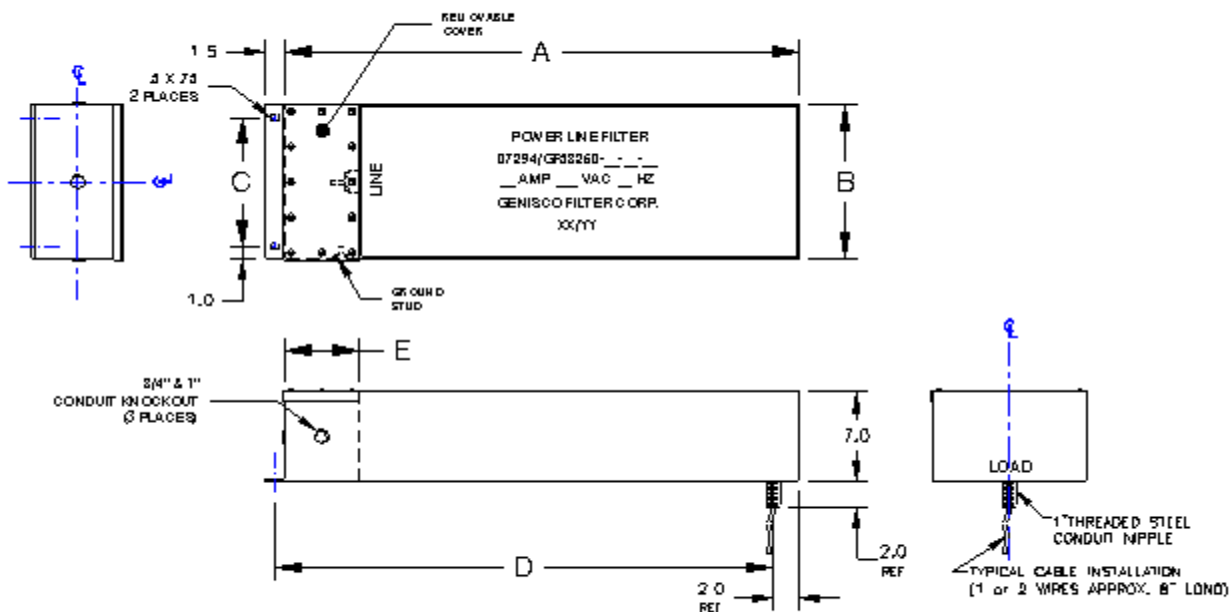
VOLTAGE RATING CODE	
A	100 VDC
B	120/208 VAC 50-60 Hz
C	120/208 VAC 400Hz
D	277/480 VAC 50-60 Hz
E	277/480 VAC 400 Hz

EMI Powerline Filters

Series GF 58260

Outline Dimensions (Inches) -10 TO 60 AMP-

Part No.	A	B	C	D	E
GF 58260-1X10	36	4.5	2.5	34.75	6.0
GF 58260-2X10	36	9	7	34.75	6.0
GF 58260-1X20	38	4.5	2.5	36.75	6.0
GF 58260-2X20	38	9	7	36.75	6.0
GF 58260-1X30	38	4.5	2.5	36.75	6.0
GF 58260-2X30	38	9	7	36.75	6.0
GF 58260-1X50	40	4.5	2.5	38.75	6.0
GF 58260-1X60	40	4.5	2.5	38.75	6.0



EMI Powerline Filters

Series GF 58260

Outline Dimensions (Inches) -100 TO 250 AMP-

Part No.	A	B	C	D	E
GF 58260-1X100	45	6.5	4.5	43.75	9
GF 58260-1X150	53	9	7	51.75	9
GF 58260-1X200	67	9	7	65.75	15
GF 58260-1X250	67	9	7	65.75	1

