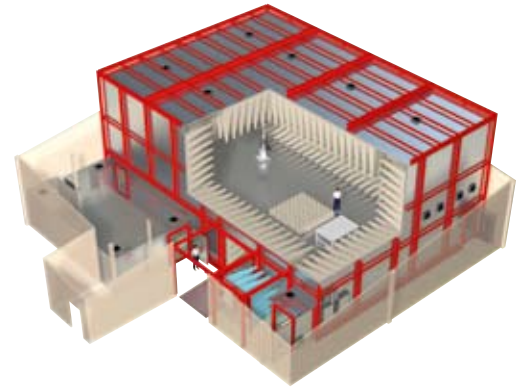


ANECHOIC CHAMBERS FOR 10.0 m MEASURING DISTANCE – SAC-10

Short Description

Anechoic chambers for 10.0 m measuring distance are planned and realized almost exclusively at customers' requirements. However, for a first impression about size and performance of a SAC-10 we defined below 4 standard model with quiet zone diameter from 2.0 m to 5.0 m. The planning of an anechoic chamber should be made as early as possible, i.e. together with the planning of the building itself so that the interfaces can be defined in time which will avoid later modifications. Typical interfaces are as follows: any kind of supply media, spaces reserved in the concrete floor for turntables / rolling test stands or driving pits for sliding gates, as well as a possible fastening of the room construction to the building construction. Furthermore, possible interfaces to emergency control / alarm systems, for example fire alarm and fire extinguishing systems, have to be considered, too. Such systems are normally not required when using our non-combustible pyramid absorbers in "thin-film" technology (fire class A2).



Technical specifications	SAC-10-2	SAC-10-3	SAC-10-4	SAC-10-5
Diameter of quiet zone	2.0 m	3.0 m	4.0 m	5.0 m
External dimensions (L x W x H)	21,080 mm x 13,730 mm x 8,550 mm	21,680 mm x 13,730 mm x 8,550 mm	22,580 mm x 15,980 mm x 9,000 mm	23,480 mm x 16,580 mm x 9,000 mm
Frequency range	26 MHz to 18 GHz			
Measuring distance	3 m and 10 m			
Absorber lining				
Walls / Ceiling	long Pyramid absorbers P 2200 and P2400			
Floor	Movable absorbers for immunity tests acc. to IEC/EN 61000-4-3 and for emission measurements >1 GHz (SVSWR) included			
Emission measurements	Full compliance acc. to CISPR 16-2-3 and CISPR 22			
Max. deviation from normalized site attenuation acc. to. CISPR 16-1-4	±3.5 dB			
Max. Site-VSWR acc. to. CISPR 16-1-4	6 dB			
Immunity tests	Full compliance acc. to IEC/EN 61000-4-3			
Size of uniform area	1.5 m x 1.5 m			
Max. deviation	-0 dB / +6 dB at 75 % of 16 measuring points			

Standard Equipment

- 1 sliding door, 1 single leaf door
- 12-16 honeycomb inserts for ventilation
- 1 mains filter, 250VAC, 2 x 16A
- 1 mains filter, 440VAC, 4 x 64A
- Penetration panels
- Electric installation
- Illumination
- Groundplane
- False floor
- Absorber lining
- 1 Turntable
- 1 Antenna mast
- 1 Controller for antenna mast and turntable
- Feed-throughs: "N", "BNC" and fibre optics

Options

- 3 phase mains filter
- Signal and / or data line filter
- Fan
- Antenna tripod
- Video and / or audio system
- Measurement of the chamber
- Measuring equipment
- Non-combustible pyramid absorbers