

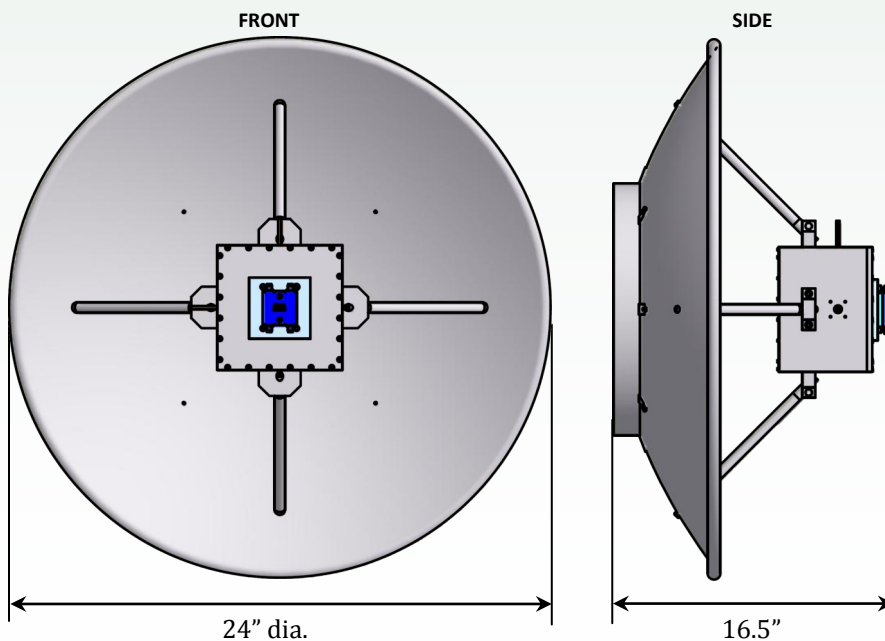
BF-550-24 Dish Antenna

The BF-550-24 antenna is an electrically superior, polarization-diverse dish feed with a 24" diameter prime focus parabolic antenna that has been designed for operation in the 1400 to 2000 MHz range.

FEATURES

- Bandwidth applications include cell-phone communications, space research and meteorology
- Highly directive for point-to-point applications
- Narrow beamwidth
- 16.6 dBiC gain at F_0
- Designed for operation in circular and linear polarization: horizontal, vertical, left-hand circular and right-hand circular
- Delivery services available to provide site surveys, mounting and installation assistance
- Low power, 20-watt version available
- The BF-550-24 is designed to operate under rigorous conditions and environments.
- All TMC Design antennas are designed and manufactured under with the auspices of our AS9100/ISO9000-certified quality management program

SPECIFICATIONS



Type	Parabolic Dish
Frequency Range	1.4 to 2.0 GHz
Gain	16.6 dBiC (F_0)
Polarization	Circular or Linear
HPBW	20° (@ 1.575 GHz)
Maximum Power	50 W or 200 W, CW †
Maximum VSWR	2:1
Connector	Type-N (f) or SMA (f) †
Height	16.5"
Width	24.0" dia.
Weight	5.25 lbs

† Depending on the hybrid model ordered, antenna characteristics such as max. power and mating connector will vary. Contact a TMC Design representative for more information.



PARABOLIC DISH



DIRECTIONAL



1.4 TO 2.0 GHz



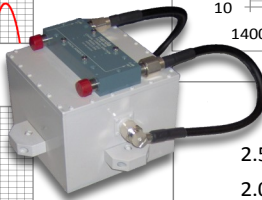
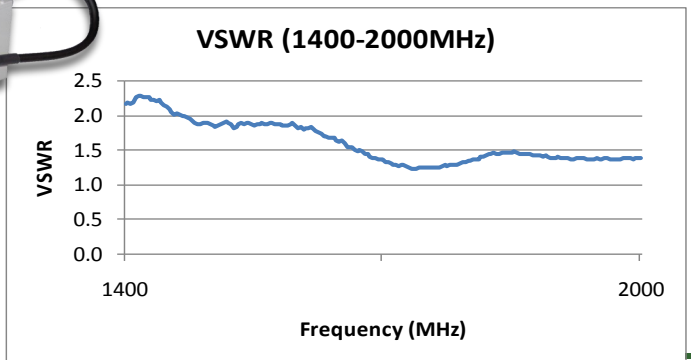
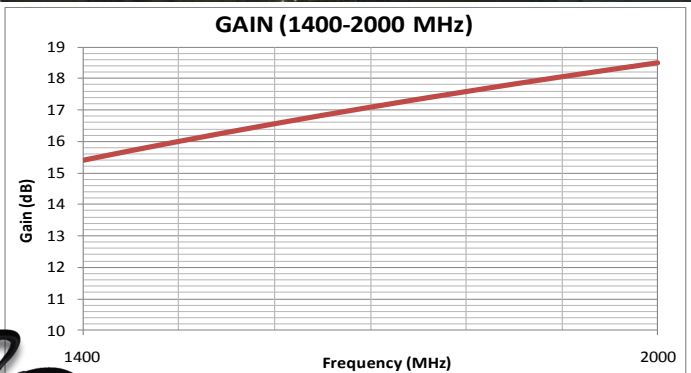
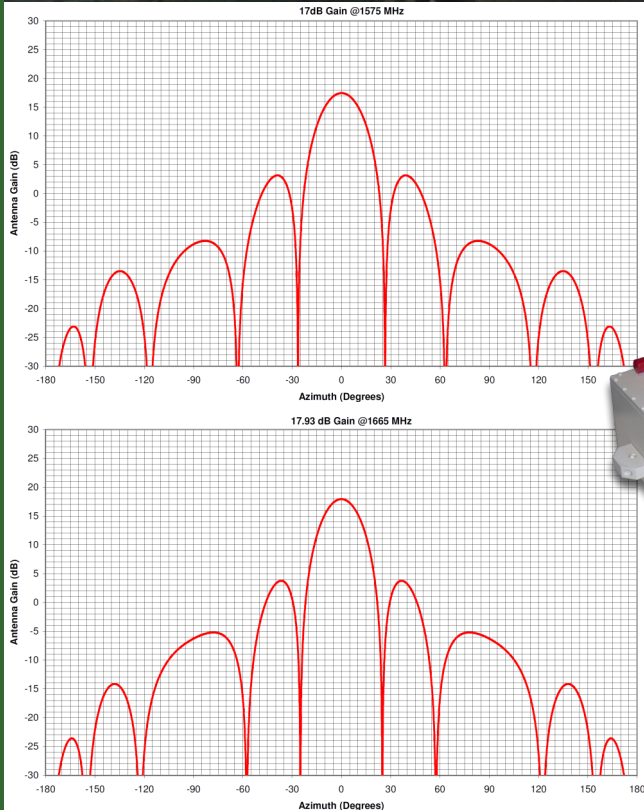
CIRCULAR/LINEAR



TMC Design Corporation

BF-550-24 Dish Antenna

PERFORMANCE



CUSTOMIZING YOUR BF-550-24 ANTENNA

MOUNTING OPTIONS

Antennas can be modified to be mounted in the manner that best fits your requirements. Magnetic mounts are recommended for applications involving automobiles. A tripod will best fit situations where quick-setup and temporary emplacement necessary. Other options include antenna towers, and solar-powered mount systems for remote operation. Contact a TMC Design representative for assistance in choosing the best mounting option.

RF MATING OPTIONS

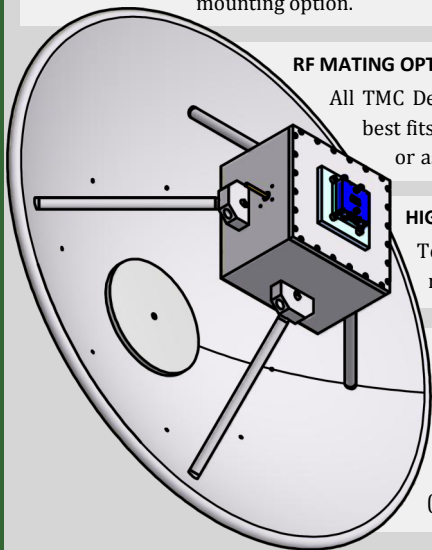
All TMC Design antennas can be modified to include an RF connector that best fits your application. Be sure to specify the connector that is needed or ask one of our representatives for assistance in finding an RF mat-

HIGH-POWER OPTIONS

To increase range and improve reception, most TMC Design antennas can be modified operate in high-power applications.

COLOR OPTIONS

A variety of paint options are available to fulfill your coating requirements. Federal Standard 595B colors, Chemical Agent Resistant Coating (CARC) or spot color schemes are available. Contact a TMC Design representative to specify coating options (most popular colors shown above).



TMC Design Headquarters
4325 Del Rey Blvd.
Las Cruces, NM 88012
(tel) 575-382-4600
(fax) 575-523-8588

TMC Design Space Operations Center
7765 Electronic Drive
Colorado Springs, CO 80922
(tel) 719-622-0130
(fax) 719-622-0134

TMC Design Space Planning & Tactics
5030 Bradford Drive
Building 1, Suite 230
Huntsville, AL 35805
(tel) 256-830-4055
(fax) 256-830-4066

www.tmcdesign.com
tmc@tmcdesign.com



**AS9100B
KEMA CERTIFIED**
ANAB Accredited by ANAB



**ISO9001:2008
KEMA CERTIFIED**
ANAB Accredited by ANAB

April 2011, Rev.2