

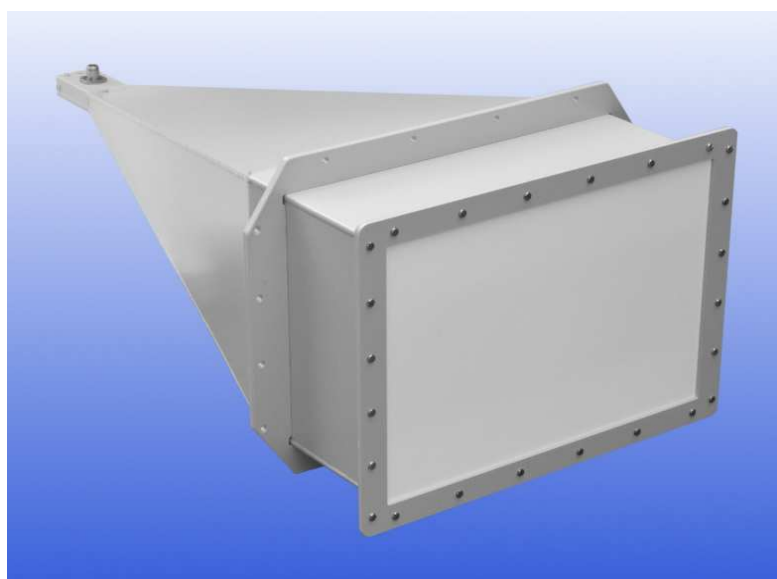
4 - 6 GHz Linearly Polarised 22 dBi Lensed Horn Antenna fitted with an N type Connector and Radome

WG12 R48 WR187

Catalogue number: **QSH-SL-4-6-N-22-R**

Q-par reference: **QMS-00748**

Contents: **Summary**
Typical Gain / Antenna Factor at 1 m
Typical Beamwidth
VSWR



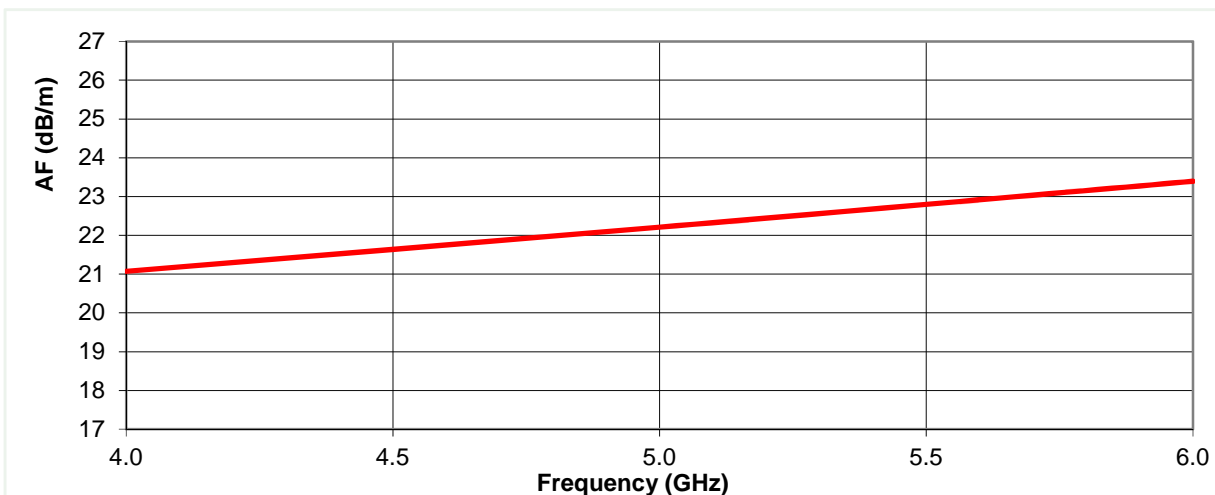
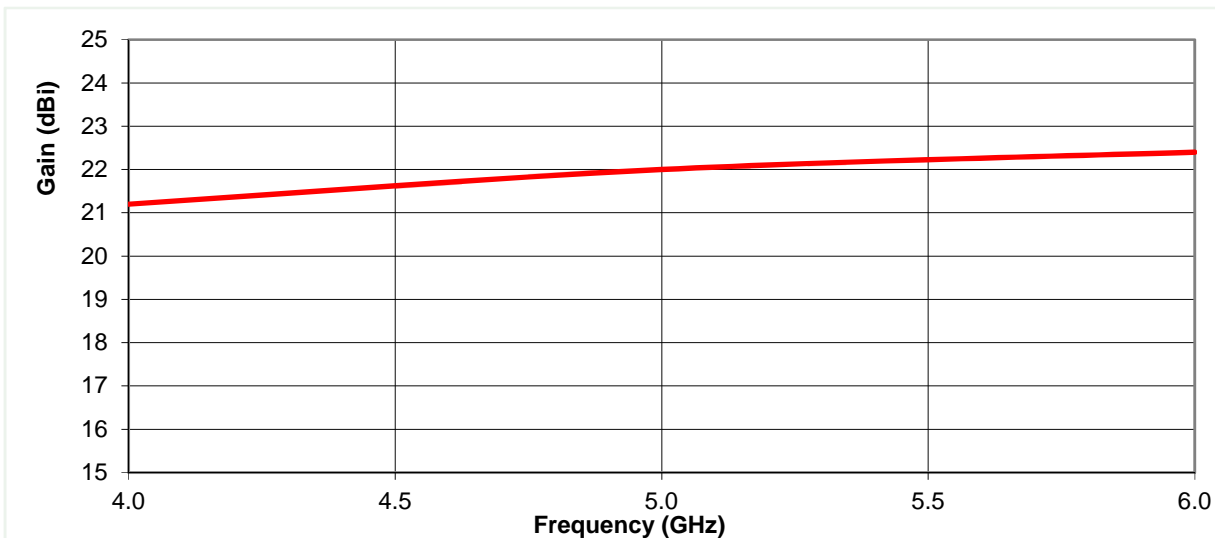
Test Report

Typical Specification

Frequency	4 to 6 GHz
Connector type	N type jack
Power Handling	5 kW peak. 150 W c.w.
VSWR	Typically < 1.3:1. 1.5:1 Max.
Gain	21.2 to 22.4 dBi at one metre
Antenna Factor	21.1 to 23.4 dB/m
3dB Beamwidth	12 to 14 degrees at one metre
Weight	7.7 kg nominal
Maximum size	450 x 336 mm mount flange x 889 mm long
Mounting	Via 16 x 6.8 mm holes in flange on horn. Refer to QMS-00748_ICD.
Construction	Stainless steel, aluminium and engineering composites.

Typical Antenna Gain / Factor at one metre

This is calculated by reference to standard gain horn antennas, and cross checked with reference to the antenna beamwidth, with an estimated error of +/- 0.8dB.



3dB Beamwidth at one metre

Estimated tolerance is ± 2 degrees

