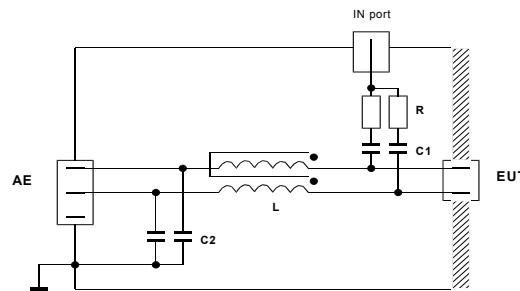
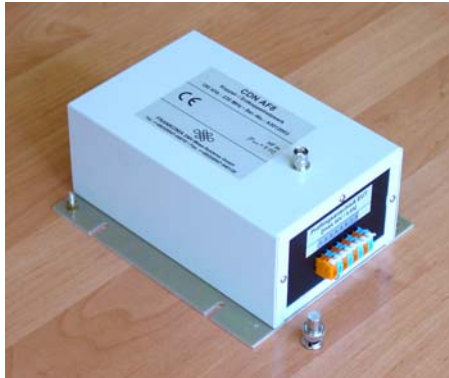


CDN AF8

for 8 unshielded, non-balanced lines

Coupling / decoupling networks (CDN) for immunity tests acc. to EN 61000-4-6 / IEC 1000-4-6



Typical circuit diagram shown with CDN AF 2

- **Order Number: AF8**
- **50Ω-termination included**

Technical data:		
EUT / AE Connection	AC voltage:	40V _{eff}
	DC voltage:	50V
	Rated current:	0.5A _{eff}
RF in	Connectors:	Terminal strip
	Frequency-range:	150kHz - 230MHz
	Connector:	BNC, 50Ω
	RF constant power:	6W
Common-mode impedance	150kHz - 26MHz:	130 - 170Ω
	26MHz - 230MHz:	105 - 210Ω
Insertion loss Generator / EUT (AE connector open/ short-circuit)	150kHz - 230MHz:	a = 10dB ±1dB
Decoupling attenuation Generator / AE (EUT connector = 150Ω)	150kHz - 1MHz:	a > 40dB
	1MHz - 80MHz:	a > 55dB
	80MHz - 230MHz:	a > 40dB
Transmission loss EUT/AE (50Ω-System)	DC - 100kHz:	a < 1dB
	100kHz - 1MHz:	a < 10dB